



artStar Pottery Studio

906 West 17th Street

Owners: Bob & Janet Swaffar

Designers: Bob Swaffar, Joseph Zambarano

Builder: E. Logan Wagner, Alarife Construction.

Solar Installer: Janet's Solar Electric

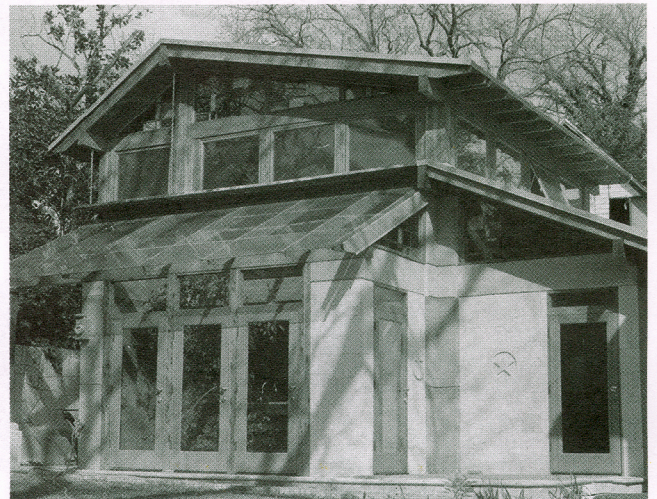
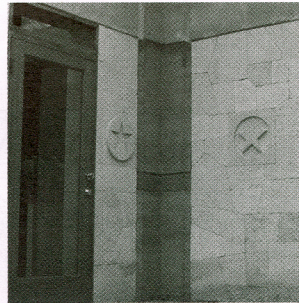
Size: 900 sf

Year completed: 2005

GBP rating: 3-star, 111 points

Sq. Ft./ton AC: 900

CENTRAL AUSTIN #7



Sustainable features

- Engineered wood/alternative framing: 18" rammed-earth walls; laminated structural beams
- Passive solar design: window placement; extended roof overhangs to shade windows; natural ventilation; operable windows in loft create thermal siphon
- Active solar: 3 kW Isofoton photovoltaic panels; data read-out 2800 inverter by PV Power
- Windows & daylighting: double-pane, insulated glass in all windows and doors; loft opening to allow daylight into lower rooms
- Roof system: metal roof w/ 6" foam insulation
- Minimized, non-toxic or recycled materials: stained concrete floors; reclaimed on site lumber & limestone from existing garage & construction forms; cactus juice plaster
- Energy-efficiency: radiant heat in floor cycled through water heater
- Local materials: cedar for framing and trim from Bastrop mill, kitchen cabinets are resawn long leaf pine & countertops of local stone

Description

This attractive structure built on an existing garage space embodies much of the artistry of its designer/owner. While it is being used as a ceramics art studio, it could also function in the future as a fully equipped apartment on its own. The 2-story, rammed earth walls provide a fairly permanent, even temperature and a delightful sense of earthiness. The brilliant day lighting permeates every space and invites creative work or sitting in the rocking chair surrounded by glass, including a tempered, laminated glass roof. The passive solar elements are augmented by a PV system tied to the utility grid, with a unique inverter that gives live data read outs. This distinctively beautiful space reflects the care and inspired labor of many hands, including the owner's.

Directions

PLEASE NOTE: the studio is located in a densely populated neighborhood without through streets and with many parking restrictions; expect to have to walk 2 – 3 blocks. Do not block driveways or within 15' of fire hydrants. "No Parking" signs will be enforced.

From Lamar Blvd, take 15th Street east to West Avenue at the first light. Turn north (left). Go 2 blocks to 17th Street and turn left. # 906 is 2 blocks down on the right.